



## Automation made Simple

- ✓ Do you spend your day doing repetitive tasks?
- ✓ Do you spend hours sorting files based upon different criteria?
- ✓ Would you like to know when something arrives on your FTP server?

Whether you are a small printshop, large publisher or a newspaper organization, FileTrain can automate many repetitive tasks for you.

### Automation

FileTrain is all about automation, it doesn't really matter what type of automation we are talking about, FileTrain can be configured to handle most tasks, automatically!

### Receiving and sorting

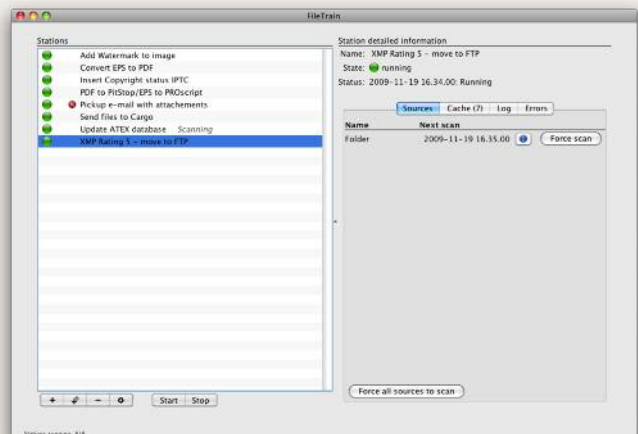
This is one of the most tedious manual tasks but let that be history. FileTrain can automatically sort files based upon literally any criteria you can think of, even on metadata inside files.

### Metadata

Metadata such as XMP and IPTC are automatically read and files can then be routed to a specific workflow after that but it doesn't stop there, FileTrain can also write metadata into your files.

### Database Updater

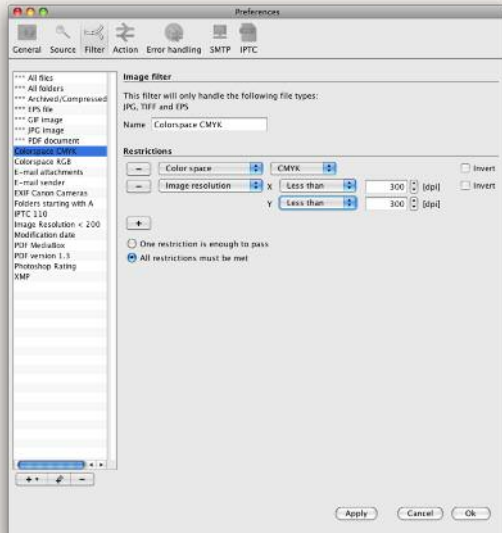
In most production workflows there is a database sitting somewhere. Certain workflows require you to update a database, it could be as simple as updating the status on a job or inserting metadata. This can easily be done with the additional DB updater module.



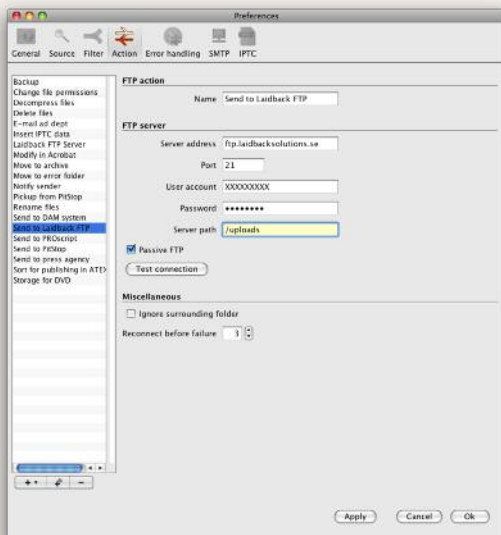
Monitor window in FileTrain 5.2.



# FILETRAIN



Filters window – this is where you setup your filtering criteria.



Actions window – use any of the readymade actions or build your own.

Contact us:  
Laidback Solutions AB  
Skolgatan 10  
S-602 25 Norrköping  
Sweden  
Tel: +46 11 12 75 80  
Fax: +46 11 12 75 89

E-mail: [info@laidbacksolutions.se](mailto:info@laidbacksolutions.se)

## Input Sources

No matter what the input sources are, FileTrain will monitor the activity. An input source can be a folder, FTP server, e-mail account, MMS service.

## Filters/Routing

Different files have to go through different workflows, PDF files should be preflighted, images need to be checked whether they comply to your standards (color space, resolution etc). This is easily done within FileTrain.

## Actions

Within the actions menu, you decide on what will happen to these files: delete, move, copy, e-mail, FTP, modify, open in Photoshop, send to QuarkXPress – the possibilities are endless.

## Plug-ins

FileTrain is built in such a way that we can easily add plug-ins for certain functionality that is not available as standard. You can also execute scripts and use command line interfaces to control 3rd party software. Examples of use can be print queues, accessing certain libraries etc.

### System Requirements FileTrain 5.2

Apple  
Mac OS Tiger, Leopard or Snow Leopard  
Java version 1.5 or later  
Minimum of 2Gb of RAM

Microsoft  
Windows XP/Vista/2003/2008  
Java version 1.5 or later  
Minimum of 2Gb of RAM

**laidback**  
[www.laidbacksolutions.se](http://www.laidbacksolutions.se)