

# *It's all there.*

*Measuring, calibrating, retouching, automating...  
Your imaging workflows with binuscan ColorCase.*



*The ultimate binuscan software suite has just found its ideal complement with the binuscan spectrophotometer, manufactured by Gretag-Macbeth. It takes the alliance of the two market leaders to guarantee a perfect integration, meeting your every need for professional digital imaging.*

# PhotoRetouch Pro

by binuscan



*PhotoRetouch Pro is the choice product for digital photographers and professional retouching artists. It includes a set of classic retouching tools that can be compared to those available in a graphic palette, and exclusive image enhancement technologies. Designed for prepress and professional photographers, it applies ICC profiles and converts color spaces.*



Apply ICC profiles to compensate input and output device deviations.



Combined process: correct images in a single operation (colors, sharpening, saturation, contrast, noise reduction...) for higher quality output.



Change colors by selecting and modifying a hue without having to create a mask.

## Very powerful tools for image quality control

Read the Image Quality Report in the Histogram window.

Increase image size 4 times: in addition to conventional interpolation tools, PhotoRetouch Pro offers a projection tool based on exclusive CDC 4x technology. Comparable to a photographic enlarger, it doesn't create any jaggies.

Use the SuperCrop tool to resize and straighten up distorted images to fit perfectly into a layout.

Use the exclusive bX-ray function to preview invisible faults in the image structure (CCD stops, Newton rings, JPEG compression artefacts, etc).

Use specific tools to descreen, remove JPEG artefacts, dust and scratches.

Obtain perfect backgrounds using the Gray Neutralizer.

Achieve the baby skin, perfect shaped face effect using the Selective Smoothing and Warp tools.

Use the Quantifier to restore natural colors in bad originals:



... and much more.

## Paint Process

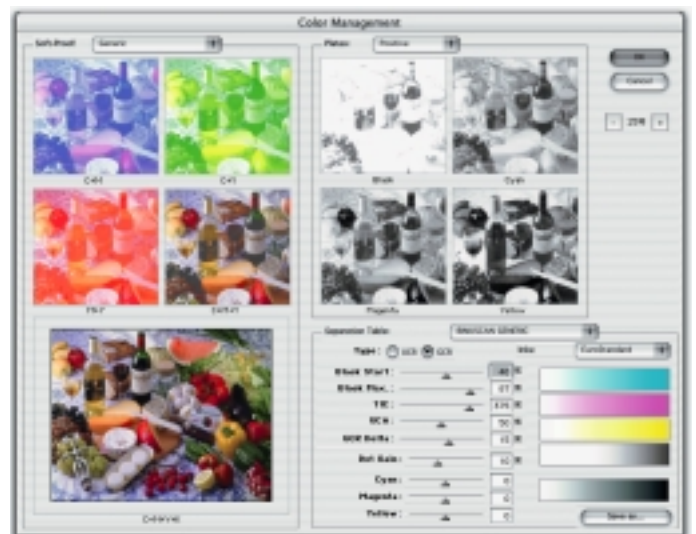
Apply corrections using the Paint Process tool: instead of wasting 95% of your time creating selections and layers before you apply an effect or a correction, use 100% of your time for creativity. Apply any process by "painting" onto the image, and brush in with the eraser to remove unwanted corrections.

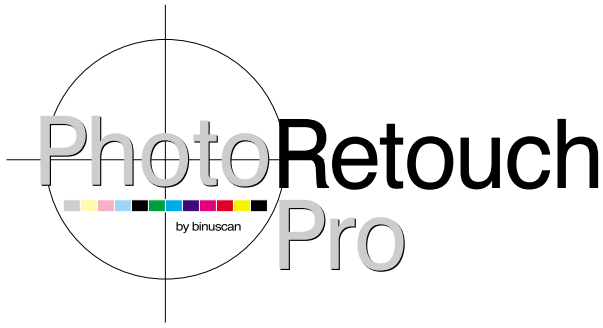
## Soft-proof

Simulate the printed result on-screen, matching an analog/digital proofing system or a given stock.

## Professional separation tables

Contains a set of pre-defined UCR and GCR tables and tools to create your own separation tables with full control over black generation.

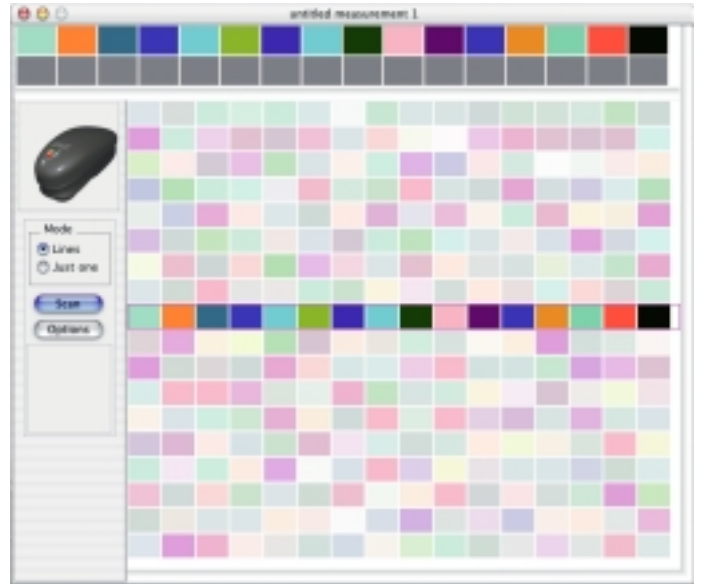
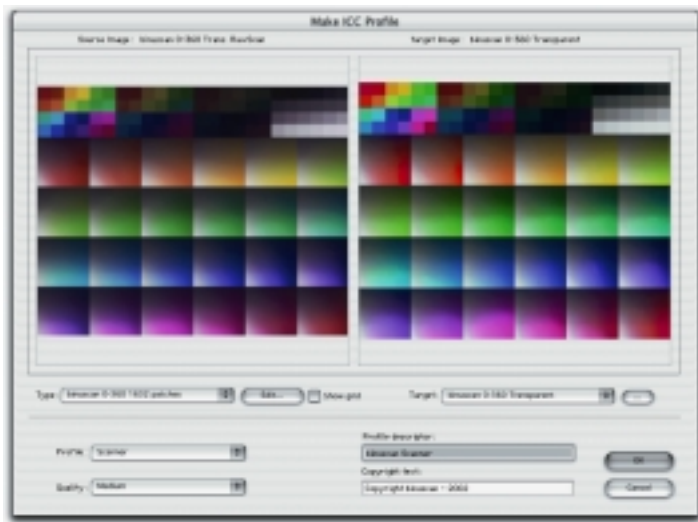




Available separately, *Input and Output Calibration options for PhotoRetouch Pro offer simple yet powerful functions to create ICC profiles for scanners, cameras, printers, and soft-proof.*

**ICC profile generator for scanners and digital cameras**

Create and modify your ICC profiles by simply comparing two images (source and target) originating from binuscan (calibration kit), IT8, MacBeth targets or any generic image.



**ICC profile generator for printers**

Use the binuscan spectrophotometer to measure printed targets, or load text description files from any spectrophotometer.



*The IPM Workflow Server uses hot folders and specification files, created by client applications. Working in a client/server architecture around the IPM Workflow Server, binuscan JobManager, IPM Administrator, binuscan ColorCorrect and PhotoRetouch Pro ensure maximum productivity, automating essential image manipulations. The IPM WorkFlow Server combines binuscan's RECO technology and conventional separation tables with ICC profiles management for complete digital image processing.*

**Processing power**

The IPM Workflow Server can apply any type of process to images, such as image correction operations, geometric transformations, color space conversions, and output to standard prepress file formats.

**Image workflow**

The IPM Workflow Server facilitates image workflow management. It can handle multiple I/O folders and is able to deliver, from a single original, differently processed images for multiple media.

**How it works**

IPM Administrator creates and configures the IPM's workflows, and set processing parameters.

As soon as an image is dropped or saved in one of the IPM Worklow Server's hot folders, it is processed in accordance. Image processing can also be remote-controlled by client applications such as JobManager.

When the process is completed, images are saved automatically at predefined locations, or updated in client applications.



*Printing good images used to require years of experience in combining inks, with no guarantee of color matching. Today, with spectrophotometers providing accurate and precise measurement, and professional digital imaging technologies, it is possible to faithfully reproduce color. The binuscan spectrophotometer, built by Gretag-Macbeth™, and binuscan's profiling solutions ensure color matching and high quality output, with remarkable ease of use and without requiring any prior experience.*

The binuscan spectrophotometer works with PhotoRetouch Pro to measure calibration targets and create printer profiles. It supports both spot mode (one patch at a time) and scanning mode (one entire line at a time with six patches per second). It also support emission measurement for monitor calibration.

#### Technical specifications:

- Spectral analyzer: holographic diffraction grating with diode array
- Spectral range: 380-730 nm
- Optical bandwidth: 10 nm
- Sampling interval: 3.5 nm (100 bands)
- Spectral reporting: 10 nm
- Analog/digital converter: 16 bit.

Includes calibration plate, USB cable, CRT monitor holder, flat panel holder, positioning target and scanning ruler.

The binuscan spectrophotometer is a part of binuscan ColorCase, an exclusive solution combining measure, calibration, professional retouching, and automation.



## binuscan ColorCase

The case contains:

- PhotoRetouch Pro: professional photo retouching, creation and application of ICC profiles, RECO process modules and conventional separation tables.
- Calibrate with ICC profiles: monitor profiles, input profiles (scanners, digital cameras) and input profiles (printers with soft-proof).
- binuscan calibration targets (transparency and reflective).
- binuscan spectrophotometer, manufactured by Gretag-Macbeth, for use with PhotoRetouch Pro.
- IPM Workflow Server + IPM Administrator, to create, automate and manage imaging workflows, using RECO modules, ICC profiles, separation tables; file format and color mode conversions, geometric operations, resampling... through hot folders or client applications. Integrated, user-definable quality control.
- JobManager: client application to remote-process images.

binuscan ColorCase is Mac OS X & Mac OS 9 compatible.

